

ACTIVE HEX



compatible with Nobel Active®, Nobel Replace® Conical Connection, and other Active connection

3.0 **NP** **RP** **WP**
SILVER *PURPLE* *YELLOW* *BLUE*
 3.0 3.5 4.3/5.0 5.5

PRICE



Final Screw- Unigrip

	3.0	NP	RP	WP	PRICE
<i>Single Unit</i>	19.068	19.027	19.030	19.030	\$12
<i>10 Pack</i>		19.027-P10	19.030-P10	19.030-P10	\$90
<i>DLC Coated* Single Unit</i>		19.227	19.230	19.230	\$20

Screw head takes Unigrip/Star driver



Titanium Analog - For 3D Printed Models

	3.0	NP	RP	WP	PRICE
<i>Single Unit</i>	14.068	14.041	14.042	14.069	\$12
<i>10 Pack</i>		14.041-P10	14.042-P10		\$90

Use same analog for both 3D printing and stone model



Impression Transfer

	3.0	NP	PRICE
<i>Includes both open & closed tray screw</i>	17.044	17.045	\$39



Titanium Healing Abutment

Heights

Heights	3.0	NP	PRICE
3mm	20.039/3	20.040/3	\$22
4mm	20.039/4	20.040/4	
5mm	20.039/5	20.040/5	



Straight Titanium Abutment

	3.0	NP	PRICE
	13.041	13.042	\$49

2mm straight polished collar with 7mm chimney with SelectGrip sandblasted surface



Angled Titanium Abutment

	3.0	NP	PRICE
15°	22.041	22.042	\$75
25°		23.042	

2mm straight polished collar with 7mm chimney with SelectGrip sandblasted surface

Unless indicated, all abutments include final screw- 3.0 is part # 19.068, NP is part #19.027, and RP/WP is part #19.030. 3.0 platform torque is 15ncm, NP/RP/WP torque is 35ncm.

** DLC Coating is a diamond like coating that reduces friction to deliver a higher gripping force at lower tightening torque value.*

ACTIVE HEX



compatible with Nobel Active®, Nobel Replace® Conical Connection, and other Active connection

3.0 **NP** **RP** **WP**
SILVER PURPLE YELLOW BLUE
 3.0 3.5 4.3/5.0 5.5

PRICE



Titanium Temporary Abutment

\$39



24.041	24.042
25.041	25.042



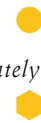
All Plastic Castable Abutment

Single Unit

Pack of 10- screw sold separately

Single Unit

Pack of 10- screw sold separately



28.041	28.042
11.041-P10	11.042-P10
29.041	29.042
12.041-P10	12.042-P10

\$25
\$90
\$25
\$90



Chrome Cobalt Abutment

\$45



30.041	30.042
31.041	31.042

Includes wax up sleeve and final screw



Premilled Abutment Blank

Titanium	ø10mmD	61.068	61.041	61.042	61.069	\$36
Titanium	ø14mmD		62.041	62.042		
Chrome Cobalt	ø14mmD	71.068	71.041	71.042	71.069	\$45

Volume discounts available - Please contact us for details



Desktop Scan Body - Round top

\$25

50.041	50.042
--------	--------

Screw sold separately use screw #19.027 (for NP) and screw# 19.030 (for RP)



Titanium Intraoral Scan Body

\$50

52.041	52.042
--------	--------

A hard anodized matted surface enables accurate scanning . Has an embedded screw for correct positioning and an optional scan body driver is available, part DTPEI, found on page 8.

Unless indicated, all abutments include final screw- 3.0 is part # 19.068, NP is part #19.027, and RP/WP is part #19.030. 3.0 platform torque is 15ncm, NP/RP/WP torque is 35ncm.

Library files for Exocad, 3Shape, and Dental Wings available on website



ACTIVE HEX

compatible with Nobel Active®, Nobel Replace® Conical Connection, and other Active connection



	3.0 SILVER 3.0	NP PURPLE 3.5	RP YELLOW 4.3/5.0	WP BLUE 5.5	PRICE
Scan Body on Ti base*					\$59
Non Engaging	50.500-P10	50.500-P10	50.500-P10	50.500-P10	
Engaging	50.600-P10	50.600-P10	50.600-P10	50.600-P10	

One size fits all. Slides over tibase and AngleBase. No screw required, autoclaveable and reusable, available in package of 10 only, FREE printable scan body STL available on website.

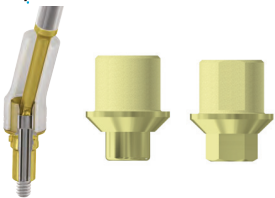


Straight TiBase						PRICE
Collar Heights	1.2mm ●	15.041	15.042			\$39
	1.5mm ● 15.068			15.069		
	3.0mm ●	15.341	15.342			
	1.2 mm ●	16.041	16.042			
	1.5mm ● 16.068			16.069		
	3.0mm ●	16.341	16.342			



Plastic sleeves for Straight Ti base **						PRICE
Pack of 5	● 32.100-P5	32.100-P5	32.100-P5	32.100-P5		\$50
Pack of 5	● 33.100-P5	33.100-P5	33.100-P5	33.100-P5		

Up to 25°
Angulated
Screw
Channel



AngleBase®Ti Base						PRICE
	●	36.041	36.042			\$39
	●	37.041	37.042			

Includes screw part# 19.441 (for NP) and screw part# 19.442 (for RP)

**Plastic sleeves for casting or pressing. Castable should be cemented to ti base only.



Plastic sleeves for AngleBase®*						PRICE
Pack of 5	0° ●	33.100-P5	33.100-P5	33.100-P5	33.100-P5	\$50
Pack of 5	10° ●	33.101-P5	33.101-P5	33.101-P5	33.101-P5	
Pack of 5	20° ●	33.102-P5	33.102-P5	33.102-P5	33.102-P5	

* The engaging scan body will slide onto the Straight and AngledBase engaging ti bases. The non engaging will slide onto the non engaging. For use in creating restorations using straight ti base and AngleBase. For custom titanium or custom chrome cobalt abutments use desktop or intraoral scan body only.

Unless indicated, all abutments include final screw- 3.0 is part # 19.068, NP is part #19.027, and RP/WP is part #19.030. 3.0 platform torque is 15ncm, NP/RP/WP torque is 35ncm. Library files for Exocad, 3Shape, and Dental Wings available on website

ACTIVE HEX



compatible with Nobel Active®, Nobel Replace® Conical Connection, and other Active connection

MULTI-UNIT PLATFORM
4.8

PRICE



Straight Multiunit Abutment

NP

RP

3.5

4.3/5.0

\$50

Collar Heights

1.5mm ●	40.007/1	40.008/1
2.5mm ●	40.007/2	40.008/2
3.5mm ●	40.007/3	40.008/3
4.5mm ●		40.008/4

Torque is 35ncm. Requires straight multiunit driver, part DTMURP.*



Angled Multiunit Abutment

\$84

17°	2.5mm ●	41.707/2	41.708/2
	3.5mm ●	41.707/3	41.708/3
30°	3.5mm ●	43.007/3	43.008/3
	4.5mm ●	43.007/4	43.008/4

Includes DLC abutment screw part #19.507 (for NP/3.5) and screw part # 19.508 (for RP /4.3-5.0). Use Unigrip/Star driver.



Impression Transfer for Multiunit**

\$39

● 17.007

Includes both open & closed tray screw



Closed Tray Impression Transfer for Multiunit**

<u>Height</u>		
5mm	17.507	\$17
5mm	17.507-P4	\$58
8mm	17.807	\$17
8mm	17.807-P4	\$58

Hand tightens onto multiunit. Available as single and pack of 4 (P4)



Multiunit Titanium Healing Abutment**

\$22

20.100

Screws onto multiunit abutment using Unigrip/Star driver screw. Drivers available.

Straight Multiunit Abutment are inserted using straight multiunit driver(part DTMURP- see page #8).

*This is the same straight multiunit driver used on Nobel®, Straumann®, 3i®, BioHorzions® and Megagen® Anyridge multiunits.

** Impression transfers and healing abutments can be used on the following multiunits - DESS, Nobel®, 3i®, BioHorzions®, and Megagen® Anyridge. DLC Coating is a diamond like coating that reduces friction to deliver a higher gripping force at lower tightening torque value.



compatible with Nobel Active® Multiunit and DESS Multiunit for Nobel Active®

MULTI-UNIT PLATFORM
4.8

PRICE



Desktop Scan Body for Multiunit

Screw sold separately, use screw part #19.110 50.007

\$25



Intra Oral Scan Body for Multiunit

52.007

\$50

A hard anodized matted surface enables accurate scanning. Has an embedded screw for correct positioning and an optional scan body driver is available, part # DTPEI, found on page 8.



Straight Ti Base on top of Multiunit Abutments

4.2mm vertical wall shaft ● 15.007
8.0mm vertical wall shaft ● 15.007/8

\$39

Includes multiunit screw part #19.006 for unigrip/star driver.
Replace with screw part #19.110 for internal hex 1.27/050 driver.



Multiunit Screw (Unigrip) on top of Multiunit

Single Unit 19.006
Pack of 10 19.006 - P10
DLC Coated - Single Unit 19.006

\$12

\$90

\$20

Torque screws to 15ncm.

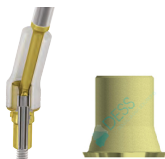


Plastic sleeve for straight ti base on top of Multiunit*

Pack of 5 ● 32.007-P5

\$50

Up to 25°
Angulated
Screw
Channel



AngleBase Ti Base on top of Multiunit Abutments

● 36.007

\$39

Includes AngleBase screw part #19.306- requires AngleBase Driver, see Page 8



Screw for Multiunit AngleBase

19.306

\$12

Torque screw to 15ncm.

DLC Coating is a diamond like coating that reduces friction to deliver a higher gripping force at lower tightening torque value.

* Plastic sleeves for casting or pressing. Castable should be cemented to ti base only.

● non-engaging

Library files for Exocad, 3Shape, and Dental Wings available on website

ACTIVE HEX



compatible with Nobel Active® Multiunit and DESS Multiunit for Nobel Active®

MULTI-UNIT PLATFORM
4.8

PRICE



Multiunit Analog* - For 3D Printed Models

<i>Single Unit</i>	14.007	\$12
<i>10 Pack</i>	14.007-P10	\$90

Use same analog for both 3D printing and stone model



Titanium Temporary Abutment on top of Multiunit

● 24.007	\$39
----------	------



All Plastic Castable Abutment on top of Multiunit

<i>Single Unit</i>	● 28.007	\$25
<i>Pack of 10, screw sold seperately</i>	● 11.007-P10	\$90



Chrome Cobalt Abutment on top of Multiunit

● 30.007	\$45
----------	------



DESS LOC on top of Multiunit

● 88.007	\$65
----------	------

*Screws onto the top of the Multiunit**

*Multiunit Analog can be used for the following multiunits - DESS, Nobel®, 3i®, BioHorzions®, and Megagen® Anyridge.

** The DESS LOC will screw onto the top of the following multiunits - DESS, Nobel®, 3i®, BioHorzions®, and Megagen® Anyridge.

Unless noted, all abutments on top of the multiunit include a unigrip/star driver screw, part #19.006.

Torque is 15ncm.

ACTIVE HEX



compatible with Nobel Active®, Nobel Replace® Conical Connection, and other Active connection

NP

PURPLE
3.5

RP

YELLOW
4.3/5.0

PRICE



DESS LOC	Gingival Height	NP	RP	PRICE
	1.0mm	88.039/1	88.040/1	\$65
	2.0mm	88.039/2	88.040/2	
Torque is 30ncm	3.0mm	88.039/3	88.040/3	
	4.0mm	88.039/4	88.040/4	



DESS LOC Analog			PRICE
	Single Unit	14.054	\$12
	Pack of 10	14.054-P10	\$90



DESS LOC Transfer			PRICE
	Closed tray made of POM	17.054	\$19

DESS LOC Retention Kits



x1	divergence up to 20°	DLRK-P1	\$24
x2		DLRK-P2	\$49
x1	divergence up to 40°	DLER-P1	\$24
x2		DLER-P2	\$49

Inserts		divergence between implants				PRICE
	up to	20°	x4	1.5 lbs / 680g	DLN2-P4	\$21
	up to	20°	x4	3.0 lbs / 1360g	DLN3-P4	
	up to	20°	x4	5.0 lbs / 2270g	DLN4-P4	
	up to	40°	x4	1.0 lbs / 450g	DLN1-P4	
	up to	40°	x4	2.0 lbs / 910g	DLN6-P4	
	up to	40°	x4	4.0 lbs / 1810g	DLN7-P4	



Inserts sold in pack of 4

Drivers, Handles, Adaptors, and Blocks



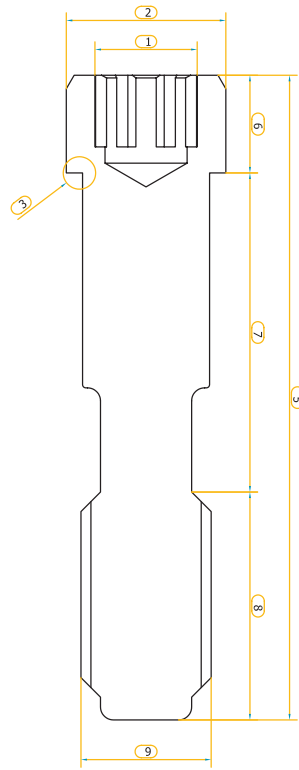
compatible with Nobel Active®, Nobel Replace® Conical Connection, and other Active connection

		20mm	24mm	35mm	<i>PRICE</i>
	Unigrip/ Star - Latch Driver	DT20U	DT24U	DT35U	\$35
	AngleBase Latch Driver	DT20TB06	DT24TB06	DT35TB06	\$47
	Laboratory handle	MDTLAA			\$65
	Premium laboratory handle	PHLAB			\$90
	Thumb Knob Handle	7mm	MDTMAN700		\$45
		9mm	MDTMAN900		
	4x4 Square Driver for inserting Straight Multiunit Abutments	DTMURP			\$35
	4x4 Square adaptor for latch style driver	TWADAP			\$35
	DESS LOC driver for 4x4 square torque wrench	DTLOC			\$35
	Adaptor from straumann torque wrench to square connection	DTSTSQ			\$35
	Latch style handpiece adaptor for 4x4 Square Connection	DTANGSQ			\$35
	Manual driver for Intraoral Scan Body	DTPEI			\$55
	DESS Chrome Cobalt	CRCO1000			TBD
	Titanium Blocks for Non Engaging or Angle Screw Channel Bridges	63.020	<i>The diameter is 15mm and the length is 20mm</i>		TBD
		63.040	<i>The diameter is 15mm and the length is 40mm</i>		TBD

TBD - New products coming soon. Visit website for current availability and pricing.

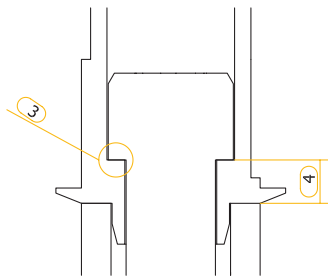


Screws fitting Nobel Active™ implants and similar implant systems



DESS REFERENCE	EQUIVALENT REF.N° OF ORIGINAL IMPLANT BRAND	PACK OF 10 AVAILABLE	PLATFORM	1. SCREW SOCKET	2. HEAD DIAMETER	3. HEAD BASE ANGLE	4. DISTANCE BETWEEN SCREW HEAD AND IMPLANT PLATFORM	5. OVERALL LENGTH	6. HEAD LENGTH	7. DISTANCE FROM THREAD TO HEAD	8. THREAD LENGTH	9. THREAD KIND	RECOM-MENDED TORQUE	COMMENTS
19.027	31168	Pack 10 available	NP	UG	2,23	72°		7,35	2,20	2,40	2,75	M1,6	35Ncm	Standard screw
19.227	29282		NP	UG	2,23	72°		7,35	2,20	2,40	2,75	M1,6	35Ncm	19.027 DLC coated version
19.101		Pack 10 available	NP	UG	2,23	0°	0,50	7,35	1,90	2,70	2,75	M1,6	35Ncm	Flat seat screw. Better for bridges, structures and zirconia abutments
19.327			NP	Torx® 06	2,30	0°		6,95	1,50	2,70	2,75	M1,6	35Ncm	Special screw head design Torx for angulated screw channels up to 25°
19.030	28815	Pack 10 available	RP	UG	2,53	54°		7,35	2,30	2,24	2,81	M2,0	35Ncm	Standard screw
19.230	36918		RP	UG	2,53	54°		7,35	2,30	2,24	2,81	M2,0	35Ncm	19.030 DLC coated version
19.328			RP	Torx® 06	2,60	0°		7,60	1,50	2,10	4,00	M2,0	35Ncm	Special screw head design Torx for angulated screw channels up to 25°
19.441			NP	Torx® 06	2,10	0°	1,00	7,30	1,40	3,90	2,00	M1,6	35Ncm	Replacement screw for DESS ANGLEBase®
19.442			RP	Torx® 06	2,45	0°	0,70 PLATFORM	7,20	1,40	3,75	2,05	M2,0	35Ncm	Replacement screw for DESS ANGLEBase®

Screws fitting Multi-unit® implant systems



19.006	29287	Pack 10 available	RP (4,8)	UG	2,00	0°	2,80	3,45	1,35	0,00	2,10	M1,4	15Ncm	Standard screw. Can be used for bridges, structures and Zirconia abutments
19.206	29285		RP (4,8)	UG	2,00	0°	2,80	3,45	1,35	0,00	2,10	M1,4	15Ncm	19.006 DLC coated version
19.306			RP (4,8)	Torx® 06	2,20	0°		3,60	1,50	0,00	2,00	M1,4	15Ncm	Replacement screw for DESS ANGLEBase® on top of multiunit